

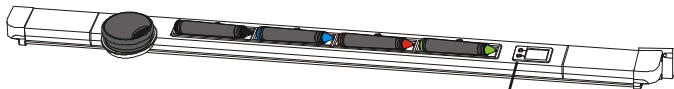
Orienting the SMART Board™ Interactive Whiteboard

You must orient the interactive whiteboard upon initial installation, or if your whiteboard or projector has been moved or jostled. Ensure the projector, computer and SMART Board software are running.

Quick Orientation

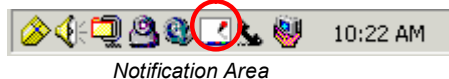
If your interactive whiteboard is accidentally moved or jostled during a presentation, use the Standard (9 Points) orientation to reorient with minimal interruption. There are two ways to begin the orientation process:

- 1 Simultaneously press and hold the two SMART Pen Tray buttons.



or

Press the SMART Board Tools icon in the Microsoft® Windows® Notification Area, and select **Orient**.



- 2 Begin the orientation at the upper-left corner. Press your finger or pen squarely on the yellow center of each red cross in the order indicated by the white, diamond-shaped background.
- 3 If you're dissatisfied with the precision of a particular orientation point, simply press the left arrow key on the attached keyboard to redo a poorly aligned orientation point.

Orientation Screen

Changing Orientation Settings

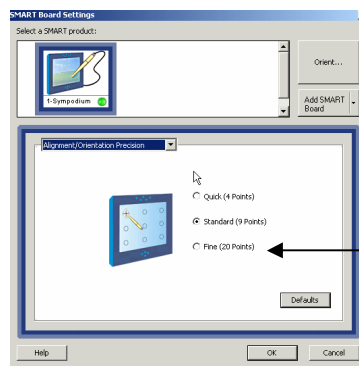
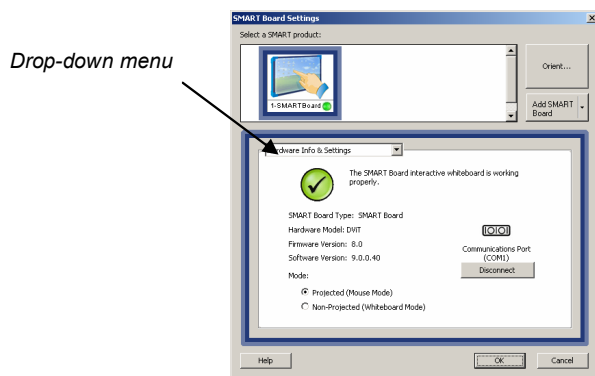
You can increase the accuracy of your finger press for applications requiring greater precision.

- 1 Press the SMART Board Tools icon in the Notification Area, and select **Control Panel**. Press the **SMART Board Settings** button.



SMART Board Settings Button

- 2 From the drop-down menu select **Alignment/Orientation Precision**.
- 3 Select **Fine (20 Points)** and press **OK**.



- 4 From the control panel, press the **Align/Orient the SMART Board** button to begin the orientation process. Press your finger or pen squarely on the yellow center of each red cross in the order indicated by the white, diamond-shaped background.